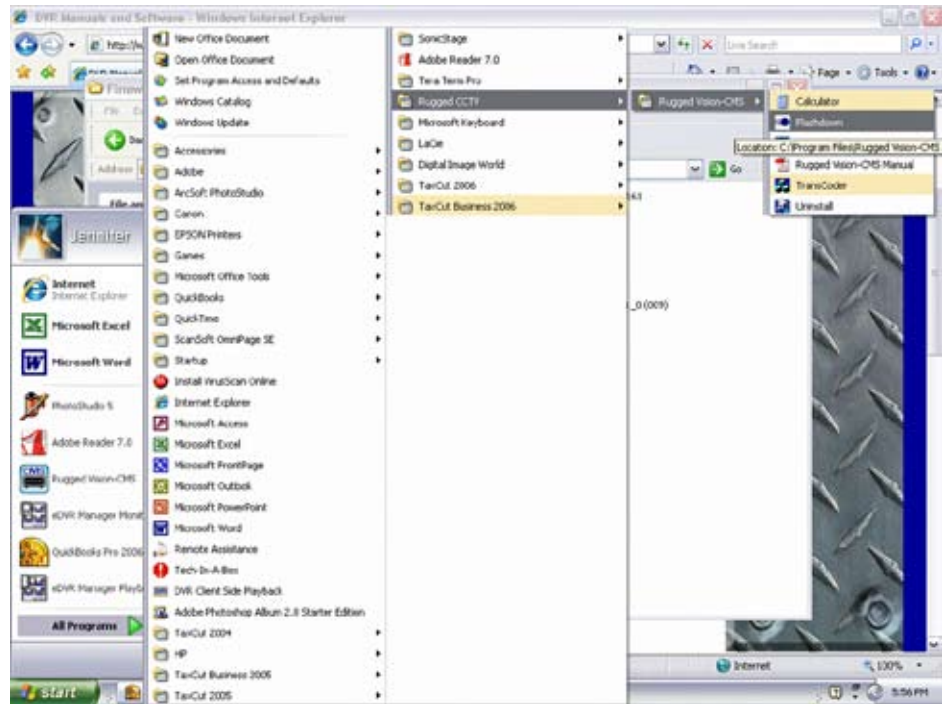


# Instructions for FIRMWARE UPGRADE

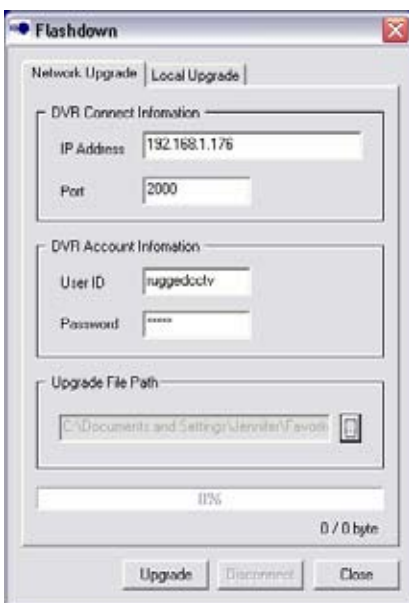
(This assumes you already have CMS loaded on the computer you are going to use for the upgrade. If you don't please go to <http://www.rugged-cctv.com/downloads.shtml> and download the newest CMS software version

Go to your start button,  
all programs,  
Rugged CCTV,  
Rugged Vision – CMS,  
and click on the flashdown program.



## Upgrade via a Networked Computer

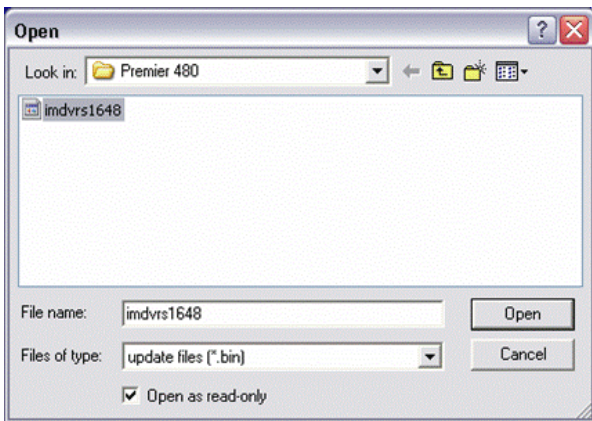
This assumes your DVR is already connected successfully to your network and you have gained access to your DVR. If not please reference your DVR manual or go to <http://www.rugged-cctv.com/downloads.shtml> so you can download your DVR manual for assistance.



Fill in the appropriate information into the Network Upgrade tab. You will need the IP address of the DVR, port number, user name, and password.

Then you will need to click on the ... button on the bottom right hand side of the Upgrade File Path Box.

You will then get a box that looks like the screen below. You need to browse for the place where you saved the firmware upgrade, click on the bin file, so it shows up in the file name section and then click open.



Once you click Open it will take you back to the flashdown screen.

Push Upgrade.

The upgrade will load on that screen, and once it is finished it will tell you it is complete, and the upgrade will start on the DVR.

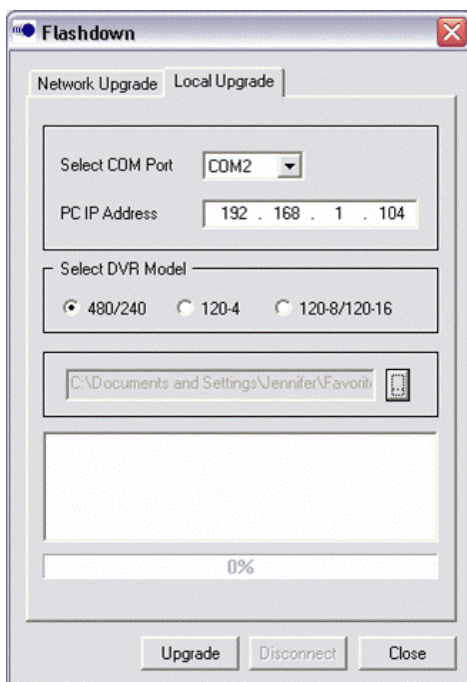
Once the upgrade is completed on the DVR, the DVR will reboot itself. Check the DVR and if the reboot does not occur automatically just unplug the DVR, wait 15 seconds and plug the DVR back in. The DVR will boot normally under the new firmware and you are up and running.

If you have an older version of CMS and/or the IE Plusviewer Control you will need to [click on this link](#) for the instructions on upgrading to the NEW versions.

## Upgrade via an RS232c Connected Computer

This assumes your computer is already connected successfully to your DVR via the provided RS232c cable and that you know the COM port on the computer in which the cable is plugged into. If not please reference your DVR manual or go to

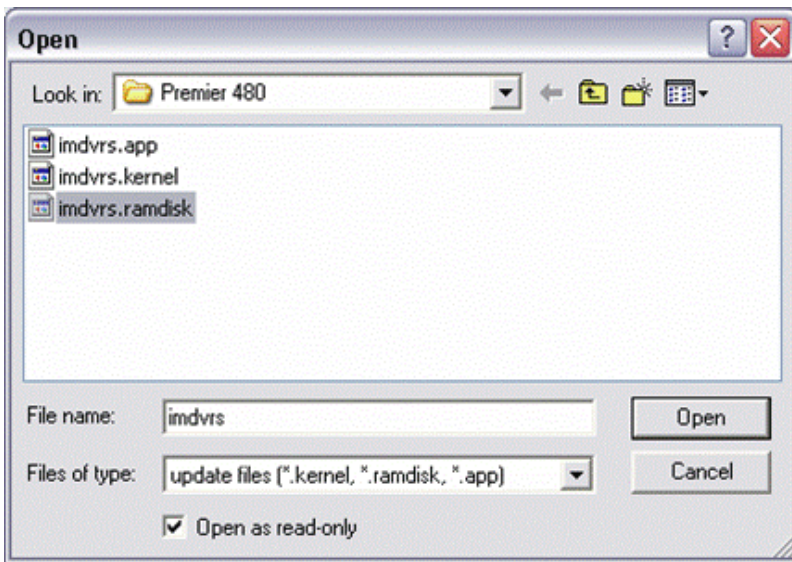
<http://www.rugged-cctv.com/downloads.shtml> so you can download your DVR manual for assistance.



Fill in the appropriate information into the Local Upgrade tab. You will need the COM port and IP address of the computer and the model of the DVR.

Then you will need to click on the ... button on the bottom right hand side of the File Path Box.

You will then get a box that looks like the screen below. You need to browse for the place where you saved the firmware upgrade, click on the individual files, so the file name is populated.



You do each file type individually. One at a time, and then click Open.

Once you click Open it will take you back to the flashdown screen and push upgrade.

The upgrade will load on that screen, and once it is finished it will tell you it is complete, and the upgrade will start on the DVR.

Once the upgrade is completed on the DVR, the DVR will reboot itself. Check the DVR and if the reboot does not occur automatically just unplug the DVR, wait 15 seconds and plug the DVR back in. The DVR will boot normally under the new firmware and you are up and running.

You will now need the newest version of CMS and/or the IE Plusviewer Control so please click on this link for those instructions if you need them.

If you experience any trouble please contact our DVR tech support at 866-301-CCTV.