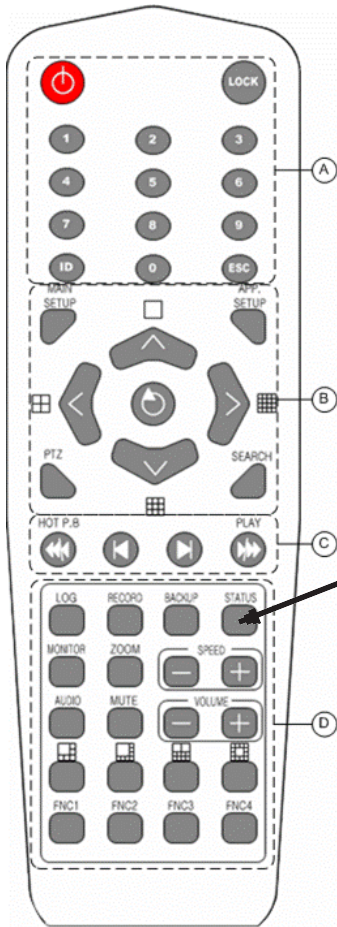


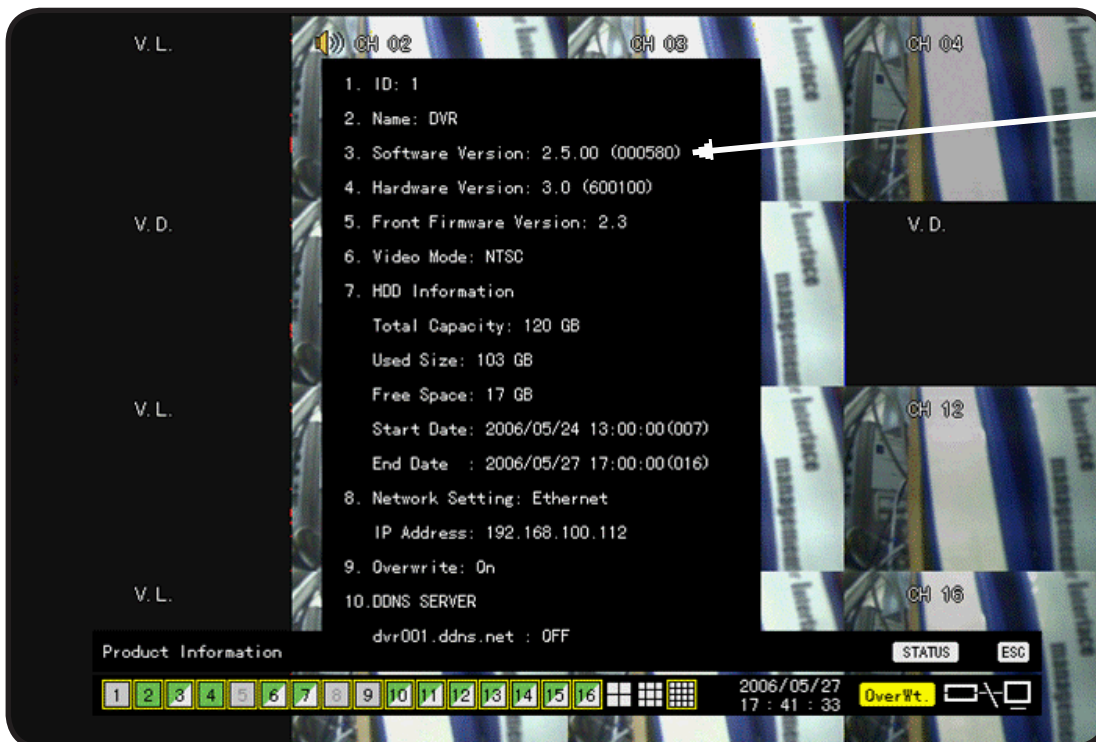
Firmware Version from the DVR

(You must have a monitor hooked directly into the DVR to find the information.)



Press the Status button on the remote control.

You will then get a screen that looks like this –



The software version is #3 on the list.

Just press the Esc. Button on the remote control to go back to the live viewing screen.

Firmware Version from a Networked or Remote PC

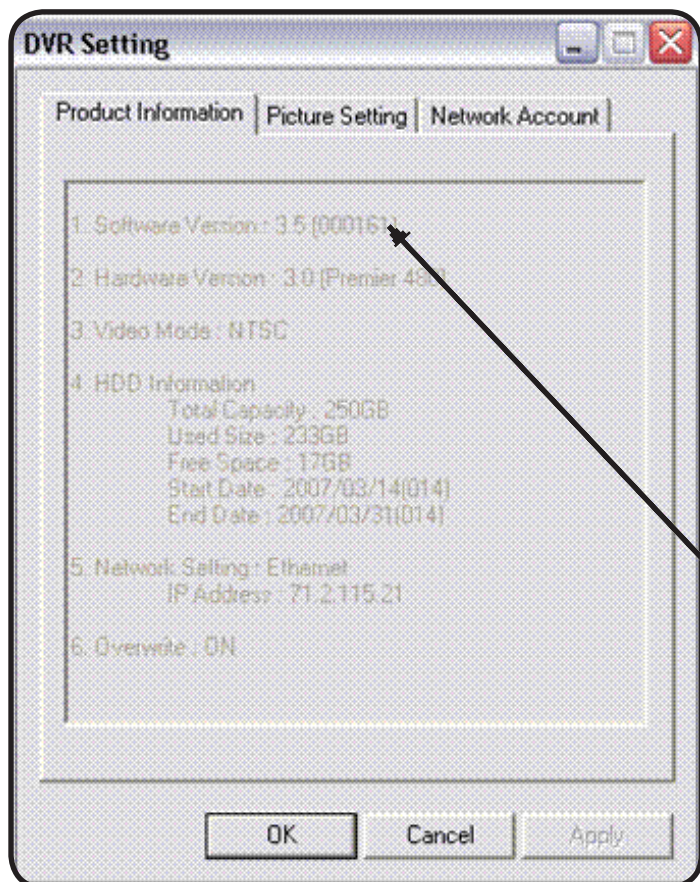
(You must have the DVR connected successfully to a networked or remote PC, and the CMS software loaded to find the information. You cannot do this from an IE web browser.)



Connect to your DVR.

Once you have connected you need to right click on your DVR in the blue box on the right.

Then left click where it says Product Information.



You will get a screen that looks like this and you can see the software version on #1.

Press Ok when you are finished and it will take the DVR setting screen away.